

# MITSUBISHI MGS SERIES

DIESEL GENERATOR SET

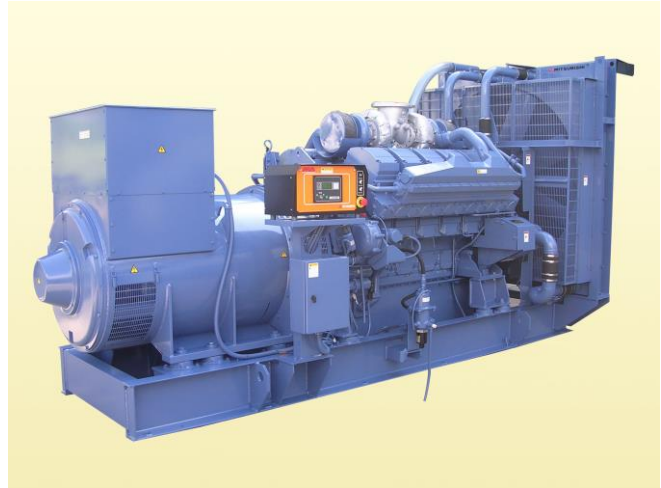
50Hz/1500 rpm/380V



## MGS1000B

**POWER RATING (0.8 P.F.)**  
**STAND-BY 1250 kVA**  
**PRIME 1125 kVA**

**MODEL CODE**  
**5S-7PC**  
**5P-7PC**



MGS1000B with typical options

### Voltage Variation

- Standard Voltage 3Phase 4 Wires  
380V
- Voltages Available 3Phase 4 Wires  
380, 400, 415 and 440V

Note: Outputs for optional voltages may differ from standard output mentioned above.

### CONDITIONS & DEFINITIONS

#### Stand-by: Code: S

Applicable for supplying emergency power at varying load in the event of the normal utility power interruption.

Fuel stop power in accordance with ISO15550, ISO3046/1, JISB8002-1, DIN6271 and BS5514.

Overload: not allowed

#### Prime: Code: P

Applicable for supplying emergency power at varying load in the event of normal utility power interruption. + 10% overload in accordance with ISO3046/1. Overload power in accordance with ISO15550, ISO3046/1, JIS8002-1, DIN6271 and BS5514.

#### Conditions:

Engine ratings are based on SAE J1349 standard conditions and also apply at ISO3046/1, DIN6271 & BS5514 standard conditions.

Fuel rates: based on ASTM D975, BS2869 and on fuel oil of 35° API (16°C or 60° F) gravity having a LHV of 42,780 kJ/kg (18,390 Btu/lb.) when used at 29°C (85° F) and weighing 838.9 g/liter (7.001lbs./U.S. gal.).

Note: \* Please contact our MHIESA office to consult in detail.

### DIMENSION (Reference Data)

Overall dimensions	L : Length	mm	4330
	W : Width	mm	1965
	H : Height	mm	2360
Total Weight (Dry)		kg	9100
Total Weight (Wet)		kg	9570

# MITSUBISHI MGS SERIES

DIESEL GENERATOR SET  
MGS1000B



## MGS SERIES DIESEL ENGINE: MITSUBISHI S12H-PTA-S

V-12, 4 stroke-cycle water-cooled, turbocharged and aftercooled

### ENGINE SPECIFICATIONS & TECHNICAL DATA

Bore	mm	150
Stroke	mm	175
Displacement	L	37.11
Piston speed	m/sec.	8.8
Compression ratio		14.0
Lubricating oil capacity	L	200
Coolant capacity without/with radiator	L	100/231
Coolant pump external resistance	m water	3.5
Coolant pump flow rate	L/min	1200
Cooling fan airflow rate	m <sup>3</sup> /min	1800
Cooling fan air flow restriction	kPa	0.1
Ambient air temperature	°C	40
Allowable exhaust back pressure	kPa	6.0
Exhaust flange size (internal diameter)	mm	200

### ENGINE OPERATING DATA

		STAND-BY 1250 kVA	PRIME 1125 kVA
Gross Engine Power*	kWm	1031	937
Brake mean effective pressure	MPa	2.3	2.1
Regenerative absorption	kW	78	78
Noise Level at 1 m (excluding: intake, exhaust & fan)	dB(A)	111	109
Fuel consumption load 100%*	L/hr.	258	234
Fuel consumption load 75%*	L/hr.	199	182
Combustion air inlet flow rate	m <sup>3</sup> /min	93	84
Exhaust gas flow rate	m <sup>3</sup> /min	245	223
Exhaust gas temperature	°C	530	515
Heat rejection to coolant	kW	677	614
Heat rejection to exhaust	kW	879	790
Heat rejection to atmosphere from engine	kW	81	74
Heat rejection to atmosphere from generator	kW	64	57

\* WITH FAN basis.

Deration for engine

Note: Please consult with your nearest Mitsubishi MGS dealer

### ENGINE STANDARD EQUIPMENT

Aftercooler  
Turbocharger filter (For MGS-B, HV stand-by and prime)  
Paper element type filter (For MGS-C, HV PRP continuous)  
Structure steel base  
Crankcase breather  
Charging alternator  
Lubricating oil cooler  
Fuel filters, full flow paper element  
Fuel transfer pump, gear driven, plunger type  
Electronic type governor  
Jacket water heater \*  
Jacket water pump, gear driven  
Lubricating oil filter, full flow paper element  
Lubricating oil pump, gear driven  
Exhaust dry manifold  
Radiator, blower fan, fan drive  
Manual shutoff  
24V DC electric starting motor

\* Depending on the model, it becomes optional setting.

# MITSUBISHI MGS SERIES

DIESEL GENERATOR SET  
MGS1000B



## MGS SERIES 7310 MK II GENERATOR CONTROL PANEL

### Features

MGS standard 7310 MK II programmable microprocessor generator control panel provides the following functions

- ◆ Start and stop control
- ◆ Engine and generator measurement items on LCD display and LED on the front panel for operation status indication
- ◆ Engine and generator shutdown and warning protection
- ◆ Generator breaker control
- ◆ Expansion module for additional output and input
- ◆ RS485 and RS232C communication for remote monitoring

### Mounting

Fabricated cubicle mounted on individual bracket with anti-vibration isolator

### Instrument and control accessories

- Generator running indicator
- Manual button
- Auto button
- CB open button (Manual only)
- CB close button (Manual only)
- Manual start button
- Manual Stop/Reset button
- Selector switch (ACTIVE, PANEL LOCK, STOP/RESET)
- Mute alarm button
- Menu navigation button
- Common alarm indicator
- Voltage adjuster
- Speed adjuster
- Emergency stop pushbutton

### Measured items on LCD display

- Generator volts L1-N, L2-N, L3-N
- Generator volts L1-L2, L2-L3, L3-L1
- Generator amps L1, L2, L3
- Generator Frequency Hz
- Engine speed RPM
- Engine oil pressure (PSI & Bar & kPa)
- Engine cooling water temperature (°C & °F)
- Battery volts
- Engine hours run
- Generator Load kW, kVA, kVar
- Generator Load kWh, kVAh, kVarh
- Power Factor
- Generator Phase Sequence

### Shutdown and Warning items on LCD display

- High coolant temperature : shutdown and warning
- Low oil pressure : shutdown and warning
- Fail to start : shutdown
- Over-speed : shutdown and warning
- Under-speed : shutdown and warning
- Loss of speed signal : shutdown
- Fail to stop : warning
- Over voltage (DC) : warning
- Under voltage (DC) : warning
- Lubrication oil filter clogged : warning
- High oil temperature : shutdown and warning \*1 \*2
- Oil pressure sender open circuit : shutdown
- Charge fail : warning
- Exhaust gas temperature high : warning \*1
- Coolant level low : warning \*1
- High crankcase internal pressure : shutdown \*1
- Generator high current : shutdown (IDMT) and warning
- Over voltage (AC) : shutdown and warning
- Under voltage (AC) : shutdown and warning
- Over frequency : warning
- Under frequency : warning
- Overload : warning
- Winding temperature high (U, V, W) : warning \*1
- Bearing temperature high : warning \*1
- Electrical trip
- Emergency stop : shutdown

\*1 : MGS-C, HV continuous are applicable as standard. The others are applicable as option.

\*2 : MGS2700 and MGS2800 are applicable as standard. The others are applicable as option.

### Operation status indicated by LED

- Remote start present
- Generator ready
- Lubrication oil filter clogged
- Electrical trip

# MITSUBISHI MGS SERIES

DIESEL GENERATOR SET  
MGS1000B



## MGS SERIES AC GENERATOR MODEL: MG-7PC

### Features

MGS original design, single bearing, 4 pole, screen protected, self excited, self regulating and brushless with fully connected damper windings, salient pole rotors, A.C. exciter and rotating rectifier unit. Direct coupled to engine and regreaseable bearing, direct drive centrifugal blower.

Compliance to 100% step load.

Quick start option available (less than 10 sec) with lubrication oil pump and jacket water heater.

Enclosure: Drip-proof IP23

### Winding System

Standard 6 wire winding provides 3 phase voltage. All windings are impregnated in vacuum pressure impregnated with a special polyester resin.

Overspeed capability: 125% for 2 minutes

Insulation: Class 'H'

Temperature rise: 150°C(Stand-by), 125°C(Prime)

### Voltage Regulator

Fully sealed, 3 phase RMS sensing AVR with built-in protection against sustained over-excitation.

Voltage regulation: Less than +/- 0.5% from no load to full load at any power factor between 0.8 lagging and 1.0 allowing for a 4% engine speed variation

Voltage adjustment: +/- 6%

Wave form: Less than 5% deviation

### Permanent Magnet Generator (PMG)

Separately excited system which provide isolated power supply for the AVR – sustain short circuit current approximately 250-300% under fault condition.

### Electrical Design

In accordance with ISO 8528-3, IEC60034-1/BS EN60034-1, BS5000 Part 3, VDE0530, NEMA MG1-32, CSA22-2-100, AS1359 and UL1446.

Telephone Harmonic factor (THF): Less than 2%

## Gen Set Option Features

- |   |   |
|---|---|
| <ul style="list-style-type: none"><li>■ ENGINE<ul style="list-style-type: none"><li>Air Cleaner, paper element dry type (For MGS-B, HV stand-by and prime only)</li><li>Battery Kit</li><li>Battery Charger</li><li>Anchor Bolts</li></ul></li><li>■ FUEL<ul style="list-style-type: none"><li>Fuel Day Service Tank</li></ul></li><li>■ COOLING<ul style="list-style-type: none"><li>Oversize radiator</li><li>Heat Exchanger</li><li>Expansion Tank</li><li>Removal STD Radiator, Fan &amp; Fan Drive</li></ul></li><li>■ LUBRICATION<ul style="list-style-type: none"><li>Lub. Oil Level Regulator</li></ul></li><li>■ EXHAUST<ul style="list-style-type: none"><li>Exhaust Silencer</li><li>Exhaust Flexible Pipe</li></ul></li></ul> | <ul style="list-style-type: none"><li>■ GENERATOR<ul style="list-style-type: none"><li>Space Heater</li><li>Power Factor Regulator</li></ul></li><li>■ CONTROL PANEL<ul style="list-style-type: none"><li>Diesel Generator Integrated Communication Synthesizer (DGICS-MII)</li><li>Auxiliary Control Panel</li><li>Cross Current Compensate Transformer (CCT)</li><li>Remote Monitor Interface</li><li>2157 expansion unit (Output signal module)</li><li>2130 expansion unit (Input signal module)</li><li>2133 expansion unit (RTD/Thermocouple input module)</li></ul></li><li>■ SWITCHGEAR<ul style="list-style-type: none"><li>Circuit Breaker MCCB &amp; ACB</li><li>Reverse Power Relay</li></ul></li></ul> |
|---|---|



No. 3, Tuas Avenue 12, Singapore 639024  
Republic of Singapore  
Phone: 65-6862 2202 Fax: 65-6862 5728  
URL: <http://www.mhiesa.com/>

COMPANY WITH  
QUALITY SYSTEM  
CERTIFIED BY DNV GL  
= ISO 9001:2015 =

Mitsubishi Heavy Industries Engine System Asia Pte Ltd, serves for the customers with improved products continually. Therefore specification and some materials will be changed without notice.  
The International System of units (SI) is used in this publication.